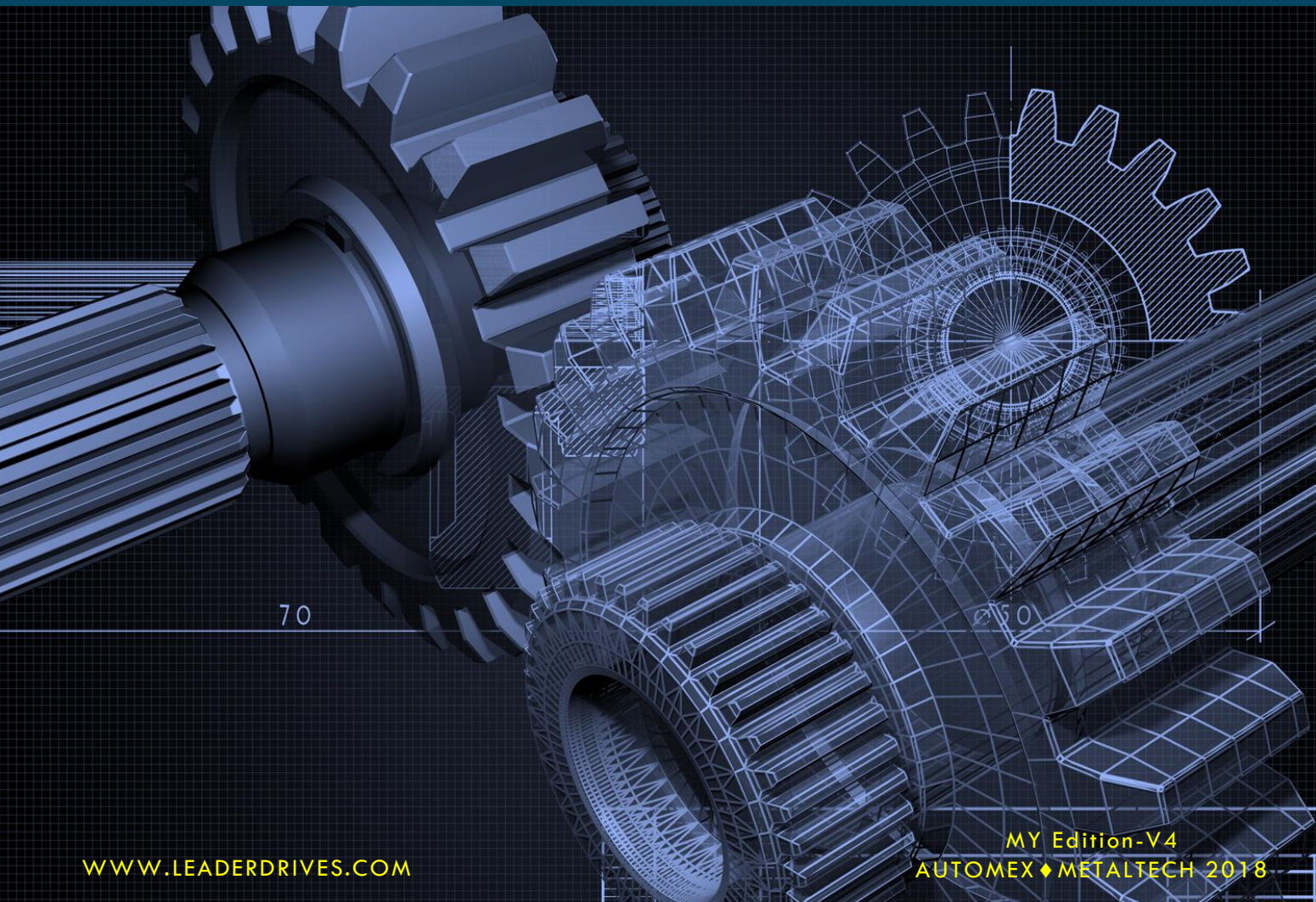


INDUSTRIAL SUPPLIES & ENGINEERING SERVICES

Product excellence Customer service oriented Customised solution capability Fast delivery



70

250

PRODUCTS AT A GLANCE : PRECISION & HIGH PERFORMANCE GEAR



ROBONIC DRIVE | HARMONIC DRIVE

ServoBox for Robotic | Zero Backlash | High ratio in compact design



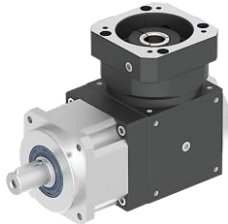
CYKO DRIVE | CYCLO DRIVE SERVOBOX

High Shock-load Capability | Low Backlash : $1 \leq 5$ arcmin



DB PLANETARY

High Precision ServoBox



PBT PLANETARY

Right Angle Precision ServoBox



SD ROTARY FLANGE

High Precision ServoBox

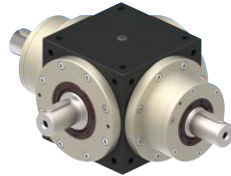


HK HOLLOW ROTARY FLANGE

Right Angle Precision ServoBox



SPIRAL BEVEL GEAR SERVOBOX



SPIRAL BEVEL GEAR MULTIPLE AXIS SERVOBOX



HOLLOW ROTARY ACTUATOR SERVOBOX



WORM GEAR PRECISION SERVOBOX



SPEED CONTROL HELICAL GEAR MOTOR
6W ~ 200W



INVERTER GEAR MOTOR
Compact Helical Gear
25W ~ 200W



INVERTER GEAR MOTOR
Compact Bevel Gear
40W ~ 200W



INDUCTION & REVERSIBLE MOTOR
Compact Helical Gear
6W ~ 200W



INDUCTION & REVERSIBLE MOTOR
Compact Helical Gear
6W ~ 200W



COMPACT WORM GEAR MOTOR
40W ~ 200W
Ratio 5 ~ 1440



SPEED CONTROLLER
SS62 - 8Pin
6W ~ 200W



SPEED CONTROLLER
SD62 - 8Pin
6W ~ 200W



INTEGRATED GEAR MOTOR
Foot Mounting
0.1kW ~ 2.2kW



INTEGRATED GEAR MOTOR
Flange Mounting / Small Flange
0.1kW ~ 2.2kW



CLUTCH & BRAKE MOTOR
DC24V
0.2kW ~ 3.7kW



ASYNCHRONOUS MOTOR
IP55 Design
0.4kW & 0.75kW

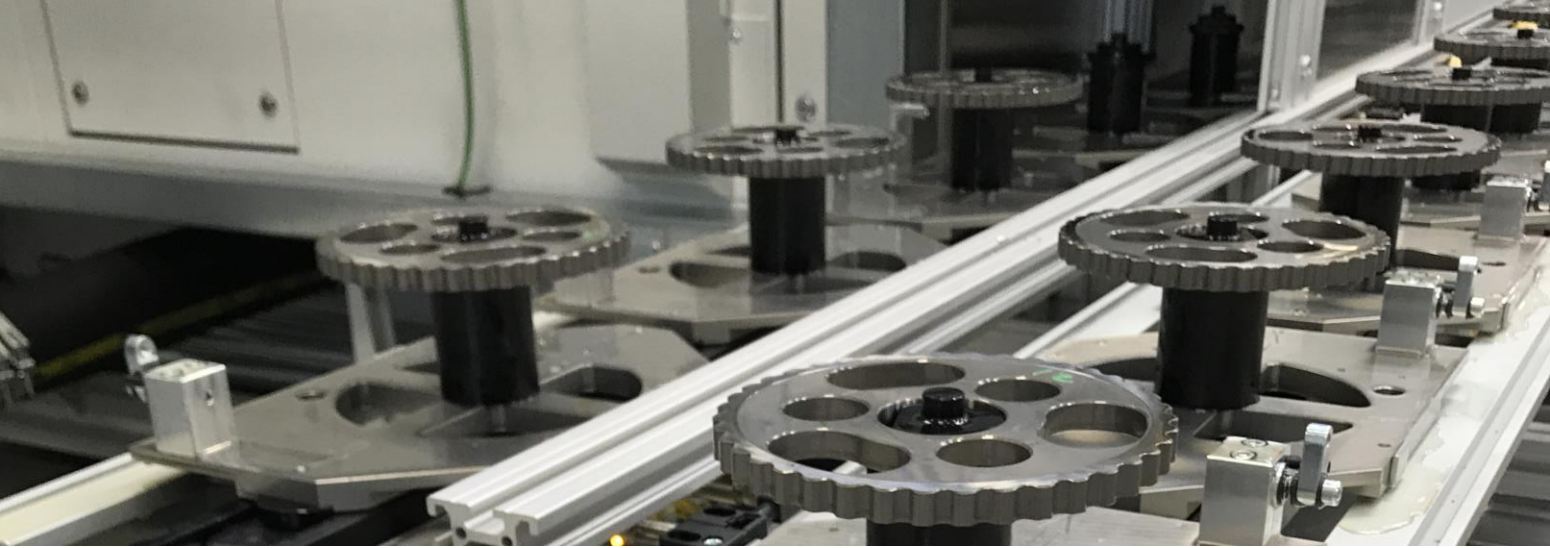


LDS
LEADERDRIVES

INTEGRATED MANUFACTURING OF GEAR REDUCER

Over the past 40 years, LM-LDS (Design, R&D and Manufacturing Centers in Taiwan) combines engineering expertise, advanced in-house manufacturing technology and massive heat treatment facilities to produce highest quality of gear reducer for most extreme applications and operation.





ROBONIC DRIVE GEAR FOR ROBOTICS

ROBONICDRIVE servobox (a.k.a Harmonic Drive) is very commonly implemented in robotics and aerospace nowadays. DSF / DHF servobox series offer the ultimate in design flexibility and can be tightly integrated into your machine design. These are well suited for applications where high torque density is of paramount importance.

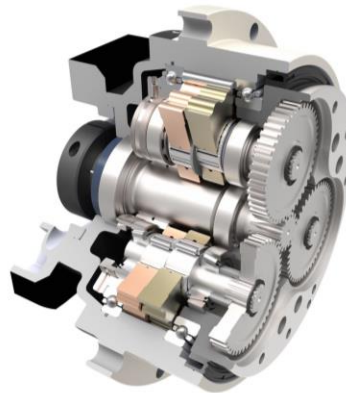
- Model available #17 ■ #20 ■ #25 ■ #32 ■ #40
- Backlash : $5 \leq 20$ arcsec ($0.08\text{arcmin} \leq 0.33\text{arcmin}$)
- Gear Reduction Ratio $1/50$ ■ $1/80$ ■ $1/100$ ■ $1/120$
- Rated Output Torque up to 382Nm
- Max. Output Torque : 2.5-times of Rated Torque
- Max. Emergency Stop Torque : 3.5-times of Rated Torque
- Nominal Input Speed : 3000rpm
- Max Radial Force : up to 15,000N
- Max Axial Force : up to 7,800N
- Torsional Rigidity : up to 0.53Nm/arcmin
- Service Life : S5 Duty > 10,000 hours ■ S1 Duty > 5000 hours



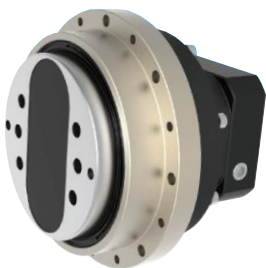
CYKO DRIVE HIGH SHOCK-LOAD CAPABILITY

CYKODRIVE servobox (a.k.a Cyclo Drive) offers relatively high ratios in compact sizes with maximum torsional rigidity and output torque.

- Model available #6 ~ #320
- Output rotary flange supported by Angular Contact Ball Bearing
- Backlash : $1 \leq 5$ arcmin
- Gear Reduction Ratio : $1/41 \sim 1/171$
- Rated Output Torque : up to 3,200Nm
- Max. Output Torque : 5-times of Rated Torque
- Max. Emergency Stop Torque : 5-times of Rated Torque
- Max. Acceleration Stop Torque : 2.5-times of Rated Torque
- Nominal Input Speed : 3000rpm
- Max Radial Force : up to 19,000N
- Max Axial Force : up to 15,000N
- Torsional Rigidity : up to 300Nm/arcmin
- Efficiency : $\geq 85\%$
- Service Life : S5 Duty > 6,000 hours ■ S1 Duty > 3000 hours



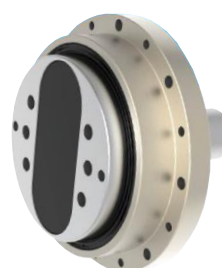
CykoDrive series



RSM Series



RDM Series



RSE Series



RCM Series

LDS HIGH PRECISION SERVOBOX SERIES 高精密行星減速機系列

 	<p>DSF Series Robonic Drive ServoBox (a.k.a Harmonic Drive) Model available #17 ~ #40 Gear Reduction Ratio 1/50 ~ 1/120 Backlash : $5 \leq 20$ arcsec ($0.08\text{arcmin} \leq 0.33\text{arcmin}$) Torsional Rigidity : up to 0.53Nm/arcmin Service Life : 10,000hrs (*15000 hrs). Universal Mounting : can be attached to any servo and stepper motor.</p>	 	<p>RSM Series Cyko Drive ServoBox (a.k.a Cycloidal Drive) Model available #6 ~ #320 *Angular Contact Ball Bearing Backlash : $1 \leq 5$ arcmin Gear Reduction Ratio : 1/41 ~ 1/171 Efficiency : $\geq 85\%$ Service Life : 6,000hrs (*3,000 hrs). Universal Mounting : can be attached to any servo and stepper motor.</p>
	<p>DB Series Planetary ServoBox Model : #44 ~ #320. DB Gear Ratio (1/X) : 3 ~ 10. DB-A Gear Ratio (1/X) : 15 ~ 1000. Backlash : 1 ~ 7 arcmin. High Efficiency < 97% (2 Stage < 94%). Protection Class : IP65. Service Life : 20,000hrs (*10,000 hrs). Universal Mounting : can be attached to any servo and stepper motor.</p>		<p>PBT Series Right Angle Planetary ServoBox Model : #44 ~ #142. DBL Gear Ratio (1/X) : 3 ~ 50. Backlash : 3 ~ 9 arcmin. High Efficiency < 94%. Protection Class : IP65. Service Life : 20,000hrs (*10,000 hrs). Universal Mounting : can be attached to any servo and stepper motor.</p>
	<p>SF Series Planetary ServoBox with Double Taper Bearing Design Model : #62 ~ #180. DB Gear Ratio (1/X) : 3 ~ 10. DB-A Gear Ratio (1/X) : 15 ~ 1000. Backlash : 1 ~ 7 arcmin. High Efficiency < 97% (2 Stage < 94%). Protection Class : IP65. Service Life : 20,000hrs (*10,000 hrs).</p>		<p>FE Series Planetary ServoBox Model : #50 ~ #220. Gear Ratio (1/X) : 3 ~ 10. Gear Ratio (1/X) : 15 ~ 100. Backlash : 8 arcmin. High Efficiency < 97% (2 Stage < 94%). Protection Class : IP65. Service Life : 20,000hrs (*10,000 hrs).</p>
	<p>SD Series Planetary ServoBox with Rotary Flange Model : #44 ~ #220. Gear Ratio (1/X) : 5 ~ 10. Gear Ratio (1/X) : 25 ~ 100. Backlash : 1 ~ 7 arcmin. High Efficiency < 97% (2 Stage < 94%). Protection Class : IP65. Service Life : 20,000hrs (*10,000 hrs). Universal Mounting : can be attached to any servo and stepper motor.</p>		<p>HK Series Right Angle Planetary ServoBox with Hollow Rotary Flange Model : #44 ~ #142. DBL Gear Ratio (1/X) : 3 ~ 50. Backlash : 3 ~ 9 arcmin. High Efficiency < 94%. Protection Class : IP65. Service Life : 20,000hrs (*10,000 hrs). Universal Mounting : can be attached to any servo and stepper motor.</p>
	<p>ST-FO Series Spiral Bevel Gear ServoBox Model : #65 ~ #210. Gear Ratio (1/X) : 1 ■ 2 ■ 3 ■ 4 ■ 5 Gear Ratio (1/X) : 10 ~ 50 / 75 ~ 500 (Integrated with Planetary ServoBox) High Efficiency < 95%. Torsional Backlash ≤ 2 arcmin. Protection Class : IP65. Ball and Crossed Roller Bearing options. Solid output shaft available.</p>		<p>ST-YV Series Spiral Bevel Gear ServoBox with Multiple Output Shaft (O/S) Model : #65 ~ #210. Gear Ratio (1/X) : 1 ■ 2 ■ 3 ■ 4 ■ 5 Gear Ratio (1/X) : 10 ~ 50 / 75 ~ 500 (Integrated with Planetary ServoBox) High Efficiency < 95%. Torsional Backlash ≤ 2 arcmin. Protection Class : IP65. Ball and Crossed Roller Bearing options.</p>
	<p>HY-DO Series Hypoid Bevel Gear ServoBox Model : #55 ~ #190. Gear Ratio (1/X) : 3 ~ 15. Gear Ratio (1/X) : 20 ~ 150. High Efficiency < 95% (< 90%). Torsional Backlash ≤ 9 arcmin. Protection Class : IP65. Single / Double Input Shaft available. Compatible with Planetary ServoBox. Ball and Crossed Roller Bearing options</p>		<p>HY-FV Series Hypoid Bevel Gear ServoBox with O/S Model : #55 ~ #190. Gear Ratio (1/X) : 3 ~ 15. Gear Ratio (1/X) : 20 ~ 150. High Efficiency < 95% (< 90%). Torsional Backlash ≤ 9 arcmin. Protection Class : IP65. Single / Double Input Shaft available. Compatible with Planetary ServoBox. Ball and Crossed Roller Bearing options</p>
	<p>GT Series Hollow Rotary Actuator ServoBox Model : #65 ~ #200. Gear Ratio : 5 ■ 10 ■ 18 ■ 20 ■ 50 ■ 100. Repetitive Positioning Accuracy ± 10 sec. High Efficiency < 95%. Torsional Backlash ≤ 1 arcmin. Lost Motion 2 arcmin. Protection Class : IP65. Ball and Crossed Roller Bearing options.</p>		<p>DEO Series Aluminium Cast Iron Worm Gear ServoBox Model : #30 ~ #70. Gear Ratio (1/X) : 5 ■ 10 ■ 15 ■ 20 30 ■ 40 ■ 50 ■ 60 Backlash : 7 arcmin. Protection Class : IP65. Universal Mounting : can be attached to any servo and stepper motor.</p>



INVERTER MOTOR

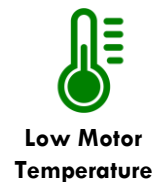
1-PHASE INVERTER

COMPACT ASYNCHRONOUS MOTOR - V-Series

- Asynchronous Motor Series with LED Digital Display Inverter Controller
- Smallest size and light weight to achieve compact equipment requirement
- Motor Rating : 25W ■ 40W ■ 60W ■ 90W ■ 120W ■ 150W ■ 180W ■ 200W
- Gearhead Ratio (1/X) : Single Stage 3~300 (Double Stage up to 3000)
- Inverter Input Voltage : AC 1ph 220V ~ 240V, 50Hz/60Hz
- Inverter Output Voltage : AC 3ph 220V

Key advantages of Inverter Motor compared to Speed Control Motor package

- Easy operation and installation with higher starting torque up to 200%
- Low motor operating temperature to further extend product lifespan
- Wide adjustable speed range up to 400Hz (Speed control motor max. 50Hz)
- Motor Overload Protection with alarm signal is possible via ampere setting
- Easy switching of multiple-speed, forward/reverse running direction
- Adjustable acceleration and deceleration of speed provide soft-starting and stopping, and smooth speed change
- Improved speed regulation can be accomplished by slip compensation
- Direct replaceable - same size and mounting with major speed control motors
- Inverter Motor as replacement for DC motor with controller is possible



ACCESSORIES



Axial Cooling Fan
Maglev Motor with Vapor Bearing.
4pole Brushless DC.
4.6W ■ 1Ø240VAC
32dB ■ 40CFM



Portable Keypad
offer remote control of the inverter via Modbus (RS485) Communication



Protective Cover
For compact IGBT Inverter
* Acrylic made



Foot Mounting Bracket (Type-F)
For compact gear motor and gearhead
















Mounting Bracket (Type-H / Type V)
For Compact IGBT Inverter and US Type Speed Controller
* Stainless steel made



Extension Cable with connector
For Motor & Controller For Motor & Inverter Available in 1.5m ■ 2m ■ 3m length

LDS COMPACT AC GEAR MOTOR SERIES 微型馬達和減速機系列

	<p>Variable Speed Motor Series with Unit Type Analogue and LED Digital Display Speed Controller Power : 6W ▫ 15W ▫ 25W ▫ 40W ▫ 60W ▫ 90W ▫ 120W ▫ 150W ▫ 180W. Gearhead Ratio (1/X) : 3~300 (3000). Input Voltage : AC 1ph 100V ~ 240V. Motor output speed : 2800rpm ▫ 1400rpm ▫ 900rpm Coactive Cooling Fan 40cfm available.</p>		<p>Inverter Bevel Gear Motor Series with LED Digital Display Inverter Power : 40W ▫ 60W ▫ 90W ▫ 120W ▫ 150W ▫ 180W Gearhead Ratio (1/X) : 9~225 Frequency Range : 0.1 ~ 400Hz. Input Voltage : AC 1ph 100V ~ 240V.</p>
	<p>Compact Right Angle Bevel Gear Motor Power : 40W ▫ 60W ▫ 90W ▫ 120W ▫ 150W ▫ 180W Gearhead Ratio (1/X) : 9~225 Input Voltage : AC 1ph 100V ~ 240V 3ph 200V ~ 440V (Inverter & Variable Speed motor available. Electromagnetic Brake available.)</p>		<p>Reversible Motor – Rated 30min (Capacitor Run) Power : 6W ▫ 15W ▫ 25W ▫ 40W ▫ 60W ▫ 90W ▫ 120W ▫ 150W ▫ 180W Gearhead Ratio (1/X) : 3~300 (3000) Input Voltage : AC 1ph 100V ~ 240V 3ph 200V ~ 440V Gear Motor with Terminal Box and Hinge Type Gearhead available</p>
	<p>Electromagnetic Brake Motor Power : 6W ▫ 15W ▫ 25W ▫ 40W ▫ 60W ▫ 90W ▫ 120W ▫ 150W ▫ 180W Gearhead Ratio (1/X) : 3~300 (3000) Input Voltage : AC 1ph 110V ~ 240V 3ph 200V ~ 440V Brake Voltage : AC 100V ~ 220V (Induction & Reversible motors available)</p>		<p>Clutch & Brake Motor Power : 40W ▫ 60W ▫ 90W ▫ 120W ▫ 150W ▫ 180W Gearhead Ratio (1/X) : 3~300 (3000). Input Voltage : AC 1ph 100V ~ 240V 3ph 200V ~ 440V Brake Voltage : DC 24V (Inverter & Variable Speed motor available)</p>
	<p>Induction Motor (Capacitor Run) Power : 6W ▫ 15W ▫ 25W ▫ 40W ▫ 60W ▫ 90W ▫ 120W ▫ 150W ▫ 180W Gearhead Ratio (1/X) : 3~300 (3000). Input Voltage : AC 1ph 100V ~ 240V 3ph 200V ~ 440V. Motor output speed range: 2800rpm ▫ 1400rpm ▫ 900rpm Gear Motor with Terminal Box and Hinge Type Gearhead available</p>		<p>Customized Compact Gear Motor We offer customize solution for our clients, including:</p> <ul style="list-style-type: none"> - Non-standard gear reduction ratio. - Customized output shaft with lead screw. - Tailor-made gearbox design based on your requirement and equipment design.
	<p>Compact Right Angle Worm Gear Motor Power : 40W ▫ 60W ▫ 90W ▫ 120W ▫ 150W ▫ 180W Worm Gear Model : #030 ~ #063 Gearhead Ratio (1/X) : 5~100 Input Voltage : AC 1ph 100V ~ 240V 3ph 200V ~ 440V (Inverter & Variable Speed motor available. Electromagnetic Brake available.)</p>		<p>Compact Right Angle Worm Gear Motor Power : 40W ▫ 60W ▫ 90W ▫ 120W ▫ 150W ▫ 180W Worm Gear Model : #030 ~ #063 Gearhead Ratio (1/X) : 75 ~ 14400 Input Voltage : AC 1ph 100V ~ 240V 3ph 200V ~ 440V (Inverter & Variable Speed motor available. Electromagnetic Brake available.)</p>
	<p>IGBT-K Series Compact IGBT Inverter with LED Digital Display Model : IGBT-K100 ▫ IGBT-K200. For Motor Power : 125W ▫ 250W Output Capacity : 0.4kVA ▫ 0.6kVA. Frequency Range : 0.1 ~ 400Hz. Overload Protection : 150% . Input Voltage : AC 1ph 100V ~ 240V. (Portable Keypad for remote control via Modbus Com-RS485 available)</p>		<p>SS31 / SS32 Series Din Rail Type Brake Pack (11pin). For Motor Power : 6W ~ 180W. Input Voltage : AC 1ph 100V ~ 240V. SS Series provides instantaneous stop, forward and reverse operation, electromagnetic brake control and thermal protector open detection functions integrated into one unit.</p>
	<p>SS61/SS62 Series Separated Din Rail Type Speed Controller (8pin). For Motor Power : 6W ~ 180W. Input Voltage : AC 1ph 100V ~ 240V.</p>		<p>SD61/SD62 Series Combined Din Rail Type Speed Controller (8pin). For Motor Power : 6W ~ 180W. Input Voltage : AC 1ph 100V ~ 240V. (Possible speed controlling by two VR at one time).</p>



INTEGRAL HELICAL GEAR

LDS AC SMALL GEAR MOTOR FH / FV / FVA / DMRS / OTS Series

- Motor Rating : 0.1kW ~ 2.2kW ■ 3kW ~ 11kW
- Gearbox and motor permanently coupled together
- Shorter in axial length and Lower weight
- Pinion gear driving the gearbox is directly mounted to the drive shaft of the motor
- Perfect, permanent alignment between motor and gearbox with zero loss in mechanical efficiency
- Compatible with Sumitomo, Nissei GTR and IEC Motor
- Optional accessories: Electromagnetic brake 240V ■ Clutch and brake DC 24V ■ Encoder ■ Water splash proof IP55 design (for 0.4kW and 0.75kW only)



FH Series
Foot mount

Small Gear Motor Series



FV Series
Flange Mount



FVA Series
With Small Flange Mount



FHB Series
With IEC Input Flange



IP55 Series
Limited ingress protection -
Protected from low pressure jets



OTS / DMRS / DMRV Series
Helical Hypoid Gear / Worm Gear
Gear reduction ratio up to 1/300



EFVF Series
With Clutch & Brake DC24V



EV Series
Mechanical Variator



Power Measuring Meter
Energy monitoring and record

LDS SMALL GEAR MOTOR 0.1KW~3.7KW 小齒馬達和減速機系列

	<p>FH Series Integral Aluminium Helical Gear Motor Foot Mounting Model : FH18 ▫ 22 ▫ 28 ▫ 32 ▫ 40 Power : 0.1kW ~ 2.2kW Gear Ratio (1/X) : 3 ~ 200 Input Voltage : AC 1ph 240V 3ph 200V ~ 440V Mounting Frame : JIS Compatible Electromagnetic Brake Option available</p>	 <p>FV Series Integral Aluminium Helical Gear Motor Flange Mounting Model : FV18 ▫ 22 ▫ 28 ▫ 32 ▫ 40 Power : 0.1kW ~ 2.2kW Gear Ratio (1/X) : 3 ~ 200 Input Voltage : AC 1ph 240V 3ph 200V ~ 440V Mounting Frame : JIS Compatible Electromagnetic Brake Option available</p>
	<p>FVA Series Integral Aluminium Helical Gear Motor Flange Mounting Model : FVA18 ▫ FVA22 Power : 0.1kW ~ 0.4kW Gear Ratio (1/X) : 3 ~ 200 Input Voltage : AC 1ph 240V 3ph 200V ~ 440V Mounting Frame : JIS Compatible Electromagnetic Brake Option available</p>	 <p>EFVF Clutch & Brake Motor Flange Mounting Model : EFVF005 ▫ 010 ▫ 015 ▫ 025 Power : 0.1kW ~ 2.2kW Input Voltage : DC24V Mounting Frame : IEC Compatible Clutch & Brake enable high frequency of starting and stopping (< 80 cycles per minute) Universal Mounting : can be attached to any asynchronous motor & gear reducers with IEC Frame</p>
	<p>FHB Series Gear Reducer Series Foot Mounting Model : FHB18 ▫ 22 ▫ 28 ▫ 40 Gear Ratio (1/X) : 3 ~ 200 For Motor Power : 0.1kW ~ 2.2kW Mounting Frame : JIS Compatible Universal Mounting : can be attached to any asynchronous motor with IEC Frame</p>	 <p>FVB Series Gear Reducer Flange Mounting Model : FVB18 ▫ 22 ▫ 28 ▫ 40 Gear Ratio (1/X) : 3 ~ 200 For Motor Power : 0.1kW ~ 2.2kW Mounting Frame : JIS Compatible Universal Mounting : can be attached to any asynchronous motor with IEC Frame</p>
	<p>DMRV Series Aluminium Worm Gear Reducer Model : DMRV 030 ▫ 040 ▫ 050 ▫ 063 ▫ 075 ▫ 090 Gear Ratio (1/X) : 5 ~ 60 (100) For Motor Power : 0.1kW ~ 7.5kW Hollow & Solid Output Shaft available. Output Flange & Torque Arm available. Universal Mounting : can be attached to any asynchronous motor with IEC Frame.</p>	 <p>OTS Series Aluminium Hypoid Gear Reducer Model : OTS 050 ▫ 063 ▫ 075 Gear Ratio (1/X) : 5 ~ 300 For Motor Power : 0.1kW ~ 4kW Hollow & Solid Output Shaft available Torque Arm & Output Flange Available Universal Mounting : can be attached to any asynchronous motor with IEC Frame</p>
	<p>Bonfiglioli VF Series Worm Gear Reducer Model : VF27 ▫ 30 ▫ 44 ▫ 49 ▫ 63 ▫ 72 ▫ 86 ▫ 110 ▫ 130 ▫ 150 ▫ 185 ▫ 210 ▫ 250 Gear Ratio (1/X) : 5 ~ 60 (100) For Motor Power : 0.1kW ~ 15kW Mounting : B5 ▫ B14 Frame Size : 63 ~ 160L</p>	 <p>LDVF IP55 Series Aluminium Asynchronous Motor Flange Mounting Power : 0.4kW ~ 0.75kW Input Voltage : AC 3ph 200V ~ 440V Mounting : B5 Frame Size : 71B5 & 80B5 IP55 : Limited ingress protection - Protected from low pressure jets</p>
	<p>LDVF Series Aluminium Asynchronous Motor Flange Mounting Power : 0.1kW ▫ 0.2kW ▫ 0.4kW ▫ 0.75kW ▫ 1.5kW ▫ 2.2kW Input Voltage : AC 1ph 240V 3ph 200V ~ 440V Mounting : B5 Frame Size : 63 ~ 100L</p>	 <p>IEC Series Aluminium Asynchronous Motor Foot & Flange Mounting Power : 0.1kW ~ 15kW Motor Speed : 1400rpm (4P) 2800rpm (2P) ▫ 900rpm (6p) Input Voltage : 3ph 200 ~ 440 ~ 660V Mounting : B3 ▫ B5 ▫ B14 ▫ B34 ▫ B35 Frame Size : 63 ~ 160L Brand : ABB ▫ Bonfiglioli ▫ Hitachi ▫ Marelli ▫ SEW ▫ Siemens ▫ Teco ▫ Watt</p>
	<p>Mechanical Variator Aluminium and Cast Iron Made Power : 0.1kW ▫ 0.2kW ▫ 0.4kW ▫ 0.75kW ▫ 1.5kW ▫ 2.2kW Frame Size : 63B5 ~ 100 B5 IEC Frame Output speed : ▫ with 2 pole motor : 500 ~ 2000rpm ▫ with 4 pole motor : 300 ~ 1000rpm ▫ with 6 pole motor : 200 ~ 630rpm</p>	 <p>Variable Frequency Drive (Inverter) For energy saving and variable speed control operation, we offer various Frequency Inverter compatible with LDS Gear Motor, including : ABB ▫ Fuji ▫ Mitsubishi ▫ Omron ▫ Panasonic ▫ Schneider ▫ Siemens Sinamics ▫ Yaskawa</p>



SINGLE PHASE IGBT INVERTER

LDS IGBT-K100 / IGBT-K200 Series

The LDS compact IGBT inverter is especially advantageous for standard application by virtue of its user friendliness. It offers simple and safe operability, energy saving, compact design as well as superior performance. The inverter is use in numerous application such as conveyor drives, feeders, machining tool and door drives. It is compatible with Unit Type AC Speed Controller (USM series).

- Motor Rating : Maximum 120W (1/6HP) ■ 200W (1/4HP)
- Rated Output Capacity : 0.4kVA ~ 0.6kVA
- Rated Output Current : 1.0 ~ 1.5Ampere
- Input Current : 2.0 ~ 3.0Ampere
- Input Voltage : AC 1phase 240V, 50Hz/60Hz
- Output Voltage : AC 3phase 240V
- Frequency Range : 0.1 ~ 400Hz.
- 150% Overload Protection.
- Spec-Key button on panel allows switch of 2 different speeds, forward/reverse operation instantly.
- Setting of upper and lower speed limits, DC braking, and counter function.
- Self Cooling ■ IP20



Portable Keypad
With Modbus (RS485)
Communication.



**Main Control
Circuit Terminal**

VARIABLE FREQUENCY INVERTERS AND ACCESSORIES



Mitsubishi Inverter
FR-D/FR-E/FR-A Series
0.1kW ~ 30kW











Siemens Inverter
Sinamics G120D / V20 Series
0.1kW ~ 30kW



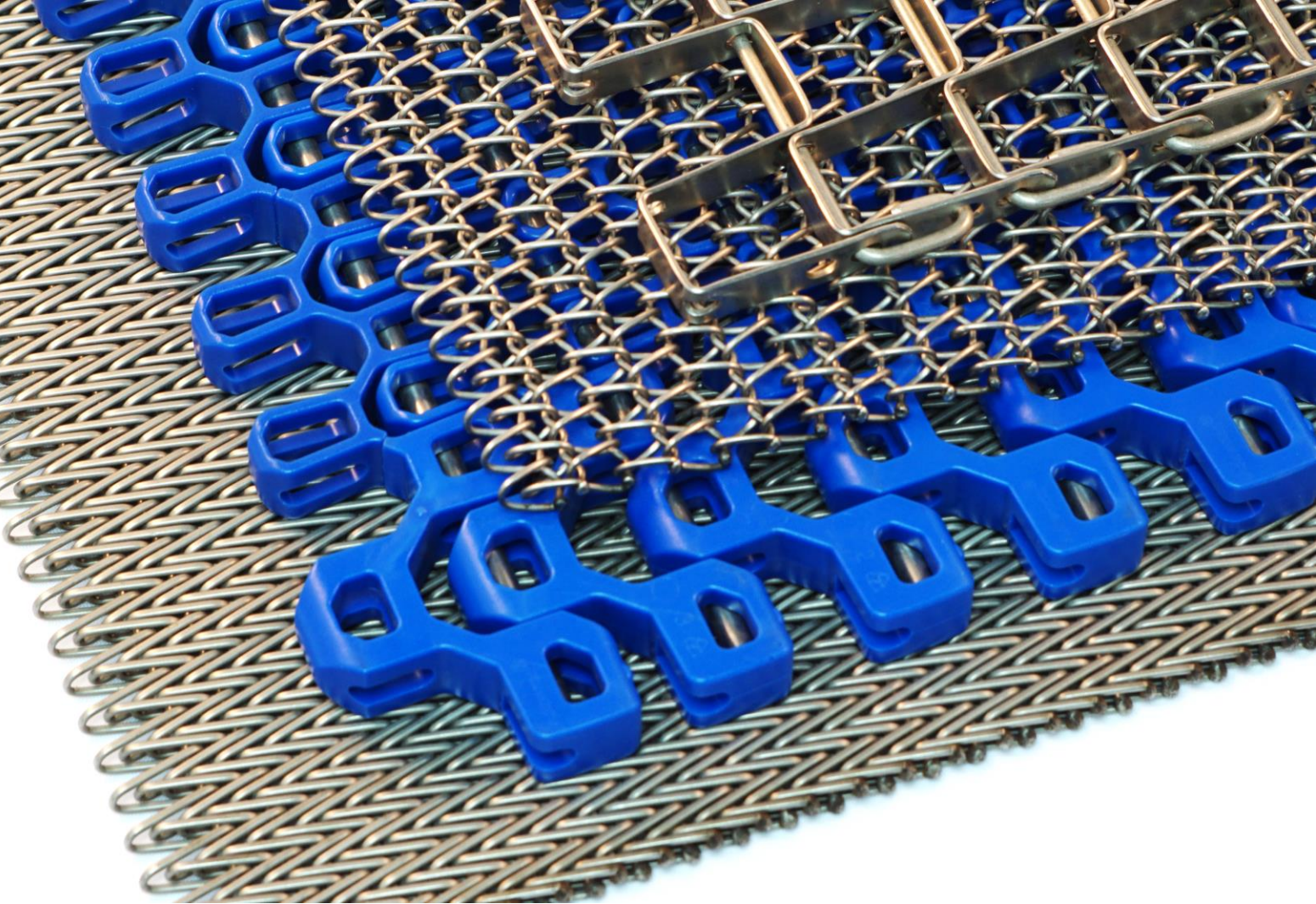
Braking Resistor & Noise Filter
Genuine Manufacturer Products

HEAVY DUTY CAST IRON GEAR MOTOR 0.2KW~45KW 鑄鐵馬達減速機系列

	<p>H-Series Integral Cast Iron Asynchronous Gear Motor (Heavy Duty) Foot Mounting Model : H201 ~ H319 Power : 0.2kW ~ 30kW Gear Ratio (1/X) : 3 ~ 200 Input Voltage : 3ph 200V ~ 440V</p>		<p>V-Series Integral Cast Iron Asynchronous Gear Motor (Heavy Duty) Flange Mounting Model : B201 ~ B319 Power : 0.2kW ~ 30kW Gear Ratio (1/X) : 3 ~ 200 Input Voltage : 3ph 200V ~ 440V</p>
	<p>HB Series Cast Iron Gear Reducer (Heavy Duty) Foot Mounting Model : TH201 ~ TH319 For Motor Power : 0.2kW ~ 30kW Gearhead Ratio (1/X) : 3 ~ 200 Input Voltage : 3ph 200V ~ 440V Universal Mounting : can be attached to any asynchronous motor with IEC Frame</p>		<p>VB Series Cast Iron Gear Reducer (Heavy Duty) Flange Mounting Model : VB201 ~ VB319 For Motor Power : 0.2kW ~ 30kW Gear Ratio (1/X) : 3 ~ 200 Input Voltage : 3ph 200V ~ 440V Universal Mounting : can be attached to any asynchronous motor with IEC Frame</p>
	<p>AS-BO Series Integral Cast Iron Asynchronous Worm Gear Motor (Heavy Duty) Model : AS047 ~ AS097 Power : 0.2kW ~ 15kW Gear Ratio (1/X) : 10 ~ 240 Hollow & Solid Output Shaft available Torque Arm & Output Flange Available Universal Mounting : can be attached to any asynchronous motor with IEC Frame</p>		<p>AS-BSA Series Cast Iron Worm Gear Reducer (Heavy Duty) Model : AS047 ~ AS097 For Motor Power : 0.2kW ~ 15kW Gear Ratio (1/X) : 10 ~ 240 Hollow & Solid Output Shaft available Torque Arm & Output Flange Available Universal Mounting : can be attached to any asynchronous motor with IEC Frame</p>
	<p>Mitsubishi SF-HRF Series High Efficiency and Energy Saving Asynchronous Motor (IE2 - Japan) Cast Iron Made Flange Mounting : B5 Power : 0.2kW ~ 37kW Input Voltage : 3ph 380V ~ 440V</p>		<p>Mitsubishi SF-HR Series High Efficiency and Energy Saving Asynchronous Motor (IE2 - Japan) Cast Iron Made Foot Mounting : B3 Power : 0.2kW ~ 37kW Input Voltage : 3ph 380V ~ 440V</p>

CAST IRON WORM GEAR REDUCER 0.2KW ~ 30KW 鑄鐵蝸輪減速機系列

 <p>HW Series Model : HW#40 ~ #175 Ratio (1/X) : 10 ~ 60</p>	 <p>LW Series Model : HW#50 ~ #350 Ratio (1/X) : 10 ~ 60</p>	 <p>LMW Series Model : HW#60 ~ #175 Ratio (1/X) : 10 ~ 60</p>	 <p>HMW (MW) Series Model : HW#50 ~ #175 Ratio (1/X) : 10 ~ 60</p>	 <p>HOM Series Model : HW#50 ~ #175 Ratio (1/X) : 10 ~ 60</p>
 <p>HOW Series Model : HW#50 ~ #175 Ratio (1/X) : 10 ~ 60</p>	 <p>LOW Series Model : HW#50 ~ #175 Ratio (1/X) : 10 ~ 60</p>	 <p>VW Series Model : HW#50 ~ #350 Ratio (1/X) : 10 ~ 60</p>	 <p>UW Series Model : HW#50 ~ #350 Ratio (1/X) : 10 ~ 60</p>	 <p>VMW Series Model : HW#50 ~ #350 Ratio (1/X) : 10 ~ 60</p>
 <p>UMW Series Model : HW#50 ~ #350 Ratio (1/X) : 10 ~ 60</p>	 <p>VOW Series Model : HW#40 ~ #175 Ratio (1/X) : 10 ~ 60</p>	 <p>VOM Series Model : HW#40 ~ #175 Ratio (1/X) : 10 ~ 60</p>	 <p>VOWY Series Model : HW#40 ~ #135 Ratio (1/X) : 10 ~ 60</p>	 <p>VOMY Series Model : HW#50 ~ #135 Ratio (1/X) : 10 ~ 60</p>



STAINLESS STEEL HYBRID & PLASTIC CONVEYOR BELT



BAKING BAND
CB3 and CB5
Stainless Steel Wire Mesh
Straight Run / Friction Drive



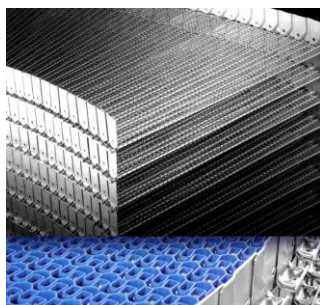
CLEACTRAC SYSTEM
Stainless Steel Wire Mesh
Straight Run / Positive Drive



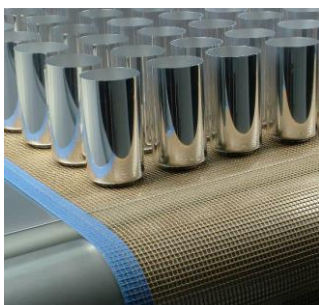
FLAT WIRE
Stainless Steel Wire Mesh
Straight Run / Positive Drive



www.ashworth.com



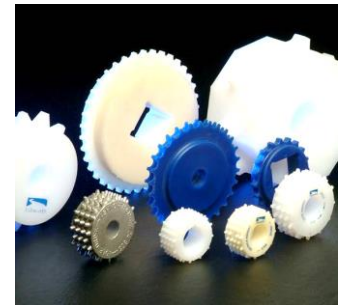
EXASTACK
Stainless Steel Wire Mesh
Curve and Straight in One
Positive Drive



TOUGHMAT
PTFE coated fiberglass for
IBO/OBO & Dry-off ovens
Straight Run / Friction Drive



Exastack
Stainless Steel Wire Mesh
Curve and Straight in One



Sprockets System
Cast Iron / Cast Stainless Steel /
Machined Stainless Steel /
Machined UHMWPE Plastic



STANDARD OR CUSTOMIZE, WE HAVE BOTH!

We serve realistic and even customised products and solutions to meet specific demand of our valued customers, including helpful technical support and committed after sales services.

This is just another commitment of the company toward your business, don't you like it!



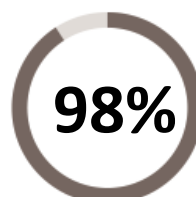
Gearbox
Engineering



Technical Support
And Collaboration



Waterproof
Design



High Efficiency
Performance



1 Year
Product Warranty